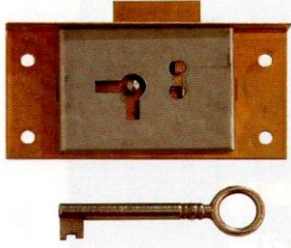


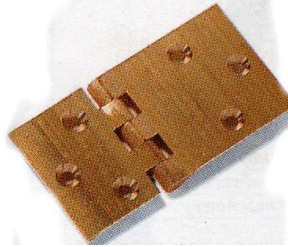
Revision of Hinges and locks

Q1. Name any 2 of the following fittings and state where they are used:



(a) Cut Cupboard Lock

Set into a cabinet door flush finish.



(b) Rule Joint Hinge

Used to join a drop leaf to a tabletop.



(c) Butterfly Hinge

A decorative hinge fitted onto a cabinet door.

Q2. Name any 2 of the following fittings and state where they are used:



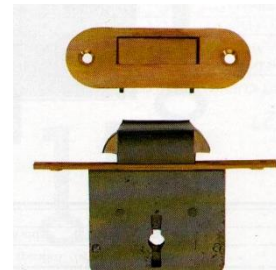
(a) Counter Hinge

Used to secure flap on bar top counter has reinforcement with double knuckles.



(b) Quadrant Stay

Used in conjunction with backflap hinges and pullout lopers.



(c) Birds Beak Lock

Used on tambour doors of writing desks.

Q3. Name any 2 of the following fittings and state where they are used:



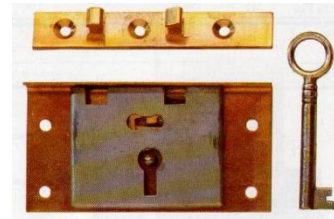
(a) Soss Hinge/
Invisible Hinge

Used on the edge of doors or sides of card tables no visible knuckle when closed.



(b) Straight Cupboard
Lock

Fixed straight onto door no fitting required except Drilling/shaping of keyhole.



(c) Box lock

Used on trinket box lids where link is engaged to prevent lid from opening

Q4. Name any 2 of the following fittings and state where they are used:



(a) Mortise Lock

Used on the edge of the door The whole body is mortised into the door edge with only the plate visible on the door's edge.



(b) Back Flap Hinge

Used to secure fall flaps on bureaus. Used in conjunction with pull out lopers.



(c) Piano Hinge

Can be cut to length and fitted to doors edge and frame.