

Fixtures & Fittings

Jennifer Byrne
2026

Traditional Fixtures
& Fittings

- ***Escutcheons***
- An escutcheon is a small decorative metal plate used to surround a keyhole cut in timber.
- Most escutcheons are pinned to the surface, but there are also small unobtrusive recessed versions.

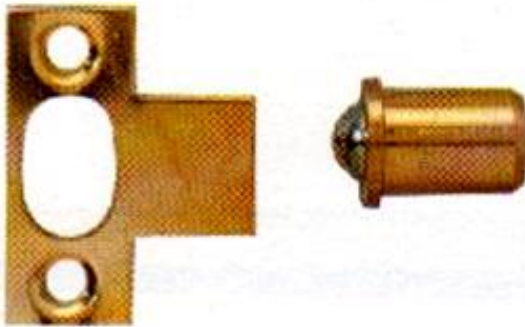


Flush fitting Escutcheon traditional and new



[ESTY](#)

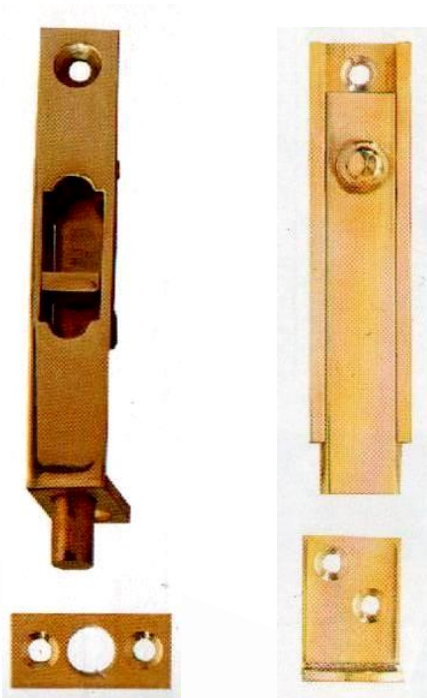
- ***Ball Catch***
- This catch comprises a spring loaded steel ball trapped in a cylindrical brass case that is inserted in the edge of a cupboard door. When the door is closed the ball springs into a recess in a metal striker plate screwed to the carcass.



Double ball catch

Homotek

- ***Door Bolt***
- On a twin door cupboard, one door is often fitted with a pair of neat surface mounted or flush bolts and the other with a lock or catch.



Flush Bolt



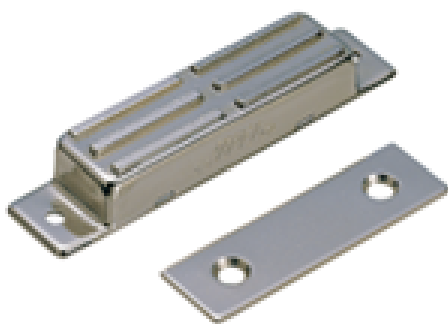
Lever Flush Bolt



Screwfix

- ***Magnetic Catch***

- Small-encased magnets are screwed to the inside of a carcass side panel or located in a hole drilled in its edge. The magnet attracts a flat metal striker plate fixed to the cupboard door.



Catches



Elite Catches